

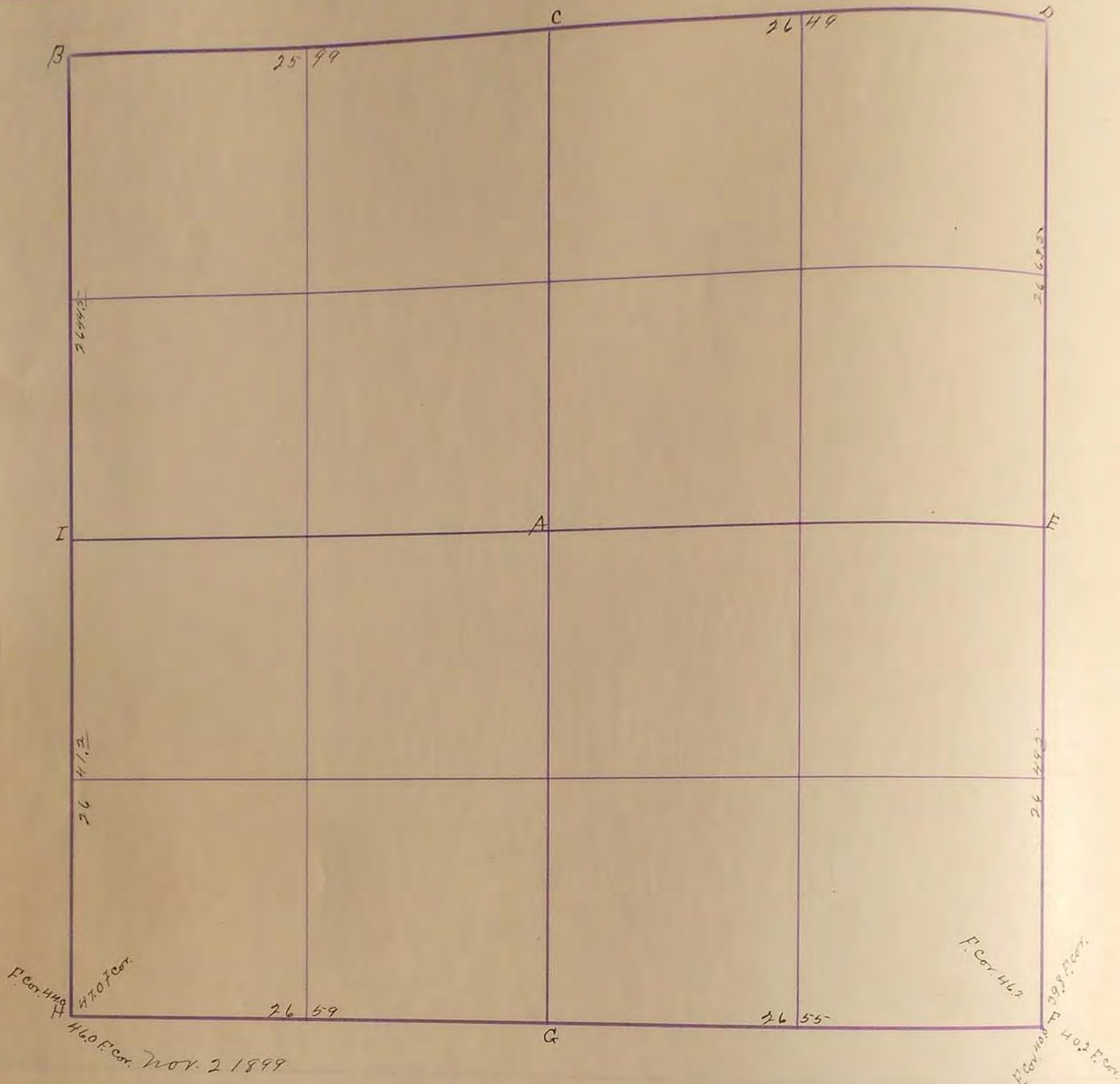
SURVEYOR'S RECORD

Section 6

Township 106

Range 40

6
7



- A. Stone
- B. Township corner
- C. Stake and mound
- D. See Sec. 5
- E. Stone in grade
- F. " 33'S + 30W. of fence
- G. "
- H. " in grade concrete block 14x14x18
- X. "

- "G" N+C. Cor Post N - 35.8'
- " " " " S - 34.7'
- " " Post NW - 36.4'
- " " " " "
- "F" N+C P.P SW - 15.45'
- " " Cor Post SE - 15.85'
- " " T.P NE - 16.15'

"C" Located large field stone 4'-6" below gravel grade, placed stone fence post 8" long above stone. B.P., N&C, P.P. South 32.15, R.P. N&C. Cor. fence post N/E 38.39; B.P., N&C. Cor. post Yard Post NW 56.44

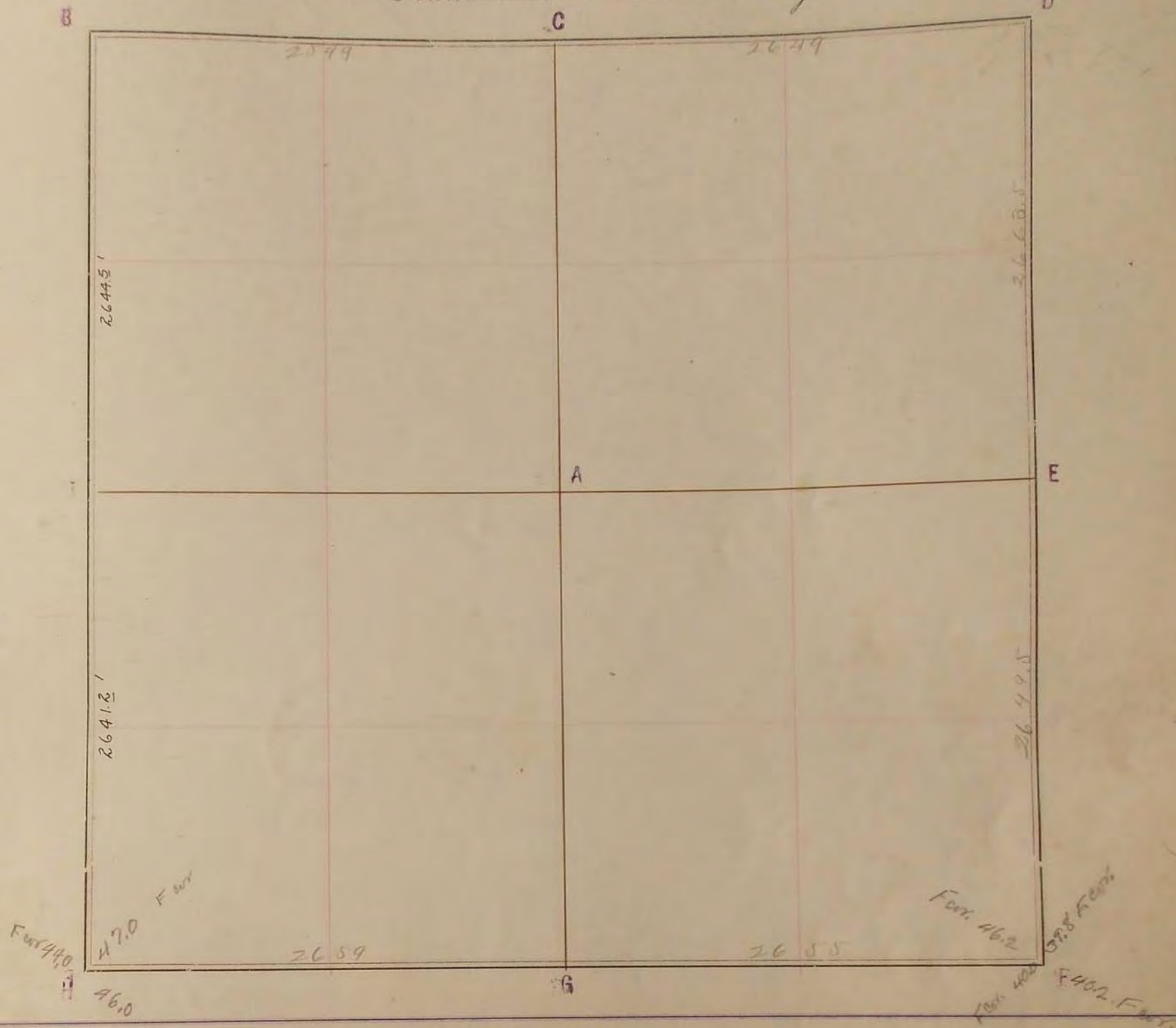
J. H. Hasletina-roft

February 5-19 34

- A. concrete with + R.P. Tack sil pale
 - N.W. 42.8'! R.P. Tack + cor. Fence Post S.W. 44.9'
 - I. concrete stone with +: Tack + fence post
 - East on line 32.7! R.P. Tack + Fence Post N.E. 41.7'
 - H. concrete stone +: Tack + sil Cole N.W. 44.6'
 - R.P. Tack + corner fence post S.W. 43.6'
- F. A. March

SURVEY No. 1112

Section 6 Town 106 Range 40



FIELD NOTES.

Nov 2 1899

- A Stone
- B Township corner
- C Stake and mound
- D See sec. 5
- E Stone in grade
- F " 33'5 + 30' W of fence
- G " "
- H " in grade Concrete block 14x14x18
- X " just west of center

February 5, 1934

- A- Concrete stone with +: R.P. Tack + tel. pole
N.W. 42.8'; R.P. Tack + cor. fence post S.W. 44.9'
- I- Concrete stone with +: Tack + fence post
East on line 32.7'; R.P. Tack + fence post
N.E. 41.7'
- H- Concrete stone +: Tack + tel. pole N.W. 44.6'
R.P. Tack + cor. fence post S.W. 43.6'

J. to March